

## SIMPLY FIND IT FAST

It's a fact of life.

Every day, your business is bombarded by a steady stream of paper-based documents such as consignment notes, timesheets, invoices and standard letters. The trick is to extract the information from these forms as efficiently and accurately as possible.

Simply Find It Fast with Redmap's Capture solutions. Using a document scanner, Capture quickly and efficiently scans your paper-based documents into an image and automatically extracts the relevant information before feeding it into your business systems.

Using world leading machine print, hand print and barcode recognition,

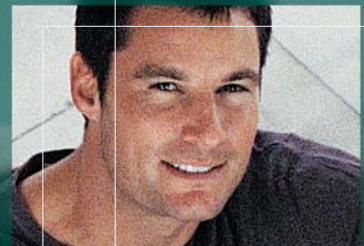
Capture **reads** the **information** you need from your documents.

The information can then be packaged and used by the various business units in your organisation.

CaptureEzy is ideal for everyday business use where a single scanning station is all that's required to handle the workload. CapturePoint, originally developed for a commercial bureau, allows for the multitasking required to gain the maximum efficiencies necessary for larger scanning projects.

Whether you choose CaptureEzy or CapturePoint, this automation results in your business having instant access to accurate data, enabling better informed business decisions.

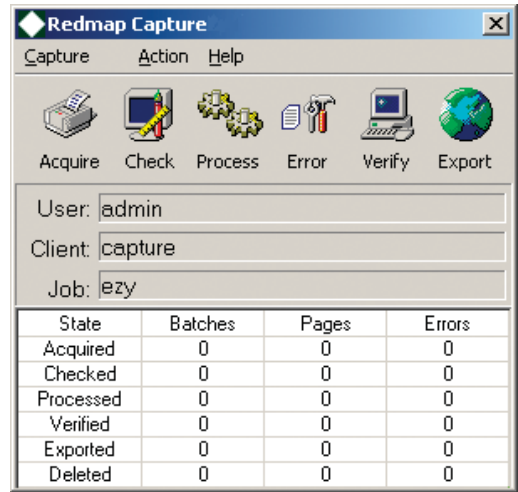
Cleaner data sooner – Simply Find It Fast!



## CaptureEzy CapturePoint






Capture solutions are simple to implement in your business, meaning minimal down-time for staff training.

Large volumes of paper-based information are automatically captured and filed; meaning your people have instant access to accurate and timely information.



## capture information with redmap's solutions

### Feature

-  Automated forms processing (such as invoices and Proof of Deliveries)
-  Scan and automatically index using machine print, hand print and barcode recognition
-  Powerful and seamless exporting functionality
-  Flexible dynamic management reporting including operator statistics, cost and client/job reporting
-  Network Configuration

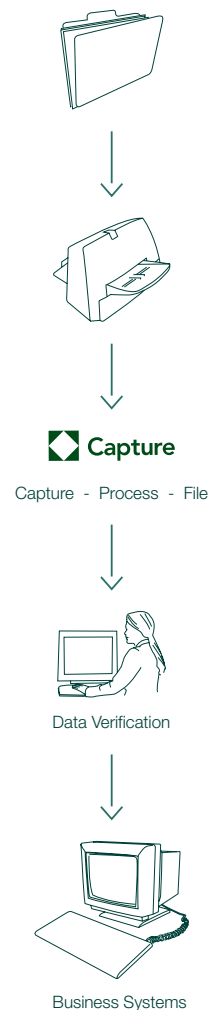
### Benefit

- No need to manually sort documents into different types before processing
- Increase efficiency with minimal manual data entry
- Once captured, information is instantly available throughout the Redmap Manage suite of solutions and other management applications
- Plan budgets and timelines more effectively and accurately monitor performance
- Capture information from multiple work stations whilst processing, verification and exporting is simultaneously under way to increase throughput

### System Requirements

- Processor: Pentium® III 1000Mhz
- RAM: 256MB
- Free Disk Space: 1000MB
- Operating System: Windows 98® (IE5), NT (with SP4, IE5), Windows 2000®, Windows XP Pro®
- Screen and resolutions: 15" or 17" & 1024x768
- CD ROM required: Yes
- Network Card: 10/100/1000/PCI
- Dedicated Server: Recommended with 1000 MB free space
- Scanner: ISIS Compatible (any level)
- Mouse: Microsoft or compatible pointing device

### How it works



For further information or demonstration of the solution in your business please contact Redmap on:

Redmap Australia – Head Office  
 Level 7, 99 Mount Street T: +61 2 8904 9288 E: sales@redmap.net  
 North Sydney NSW 2060 F: +61 2 8904 9388 W: www.redmap.net



Redmap Australia  
 Level 10, 77 Eagle Street  
 GPO Box 963  
 Brisbane QLD 4001  
 T: +61 7 3032 2000  
 F: +61 7 3032 2001

Redmap USA  
 2905 Shawnee Industrial Way  
 Suite 300  
 Suwanee GA 30024  
 T: +1 678 714 3400  
 F: +1 678 714 3401

## Industries...

Imaging or Data Capture Service Bureaus, Corporate Accounts Receivable (Proof of Delivery, Collections), Archival Services, Market Research companies or any requirement for high volume multi-user scanning, data validation, forms processing.

## Markets

SME  
Corporate  
Government  
Proof of Transaction

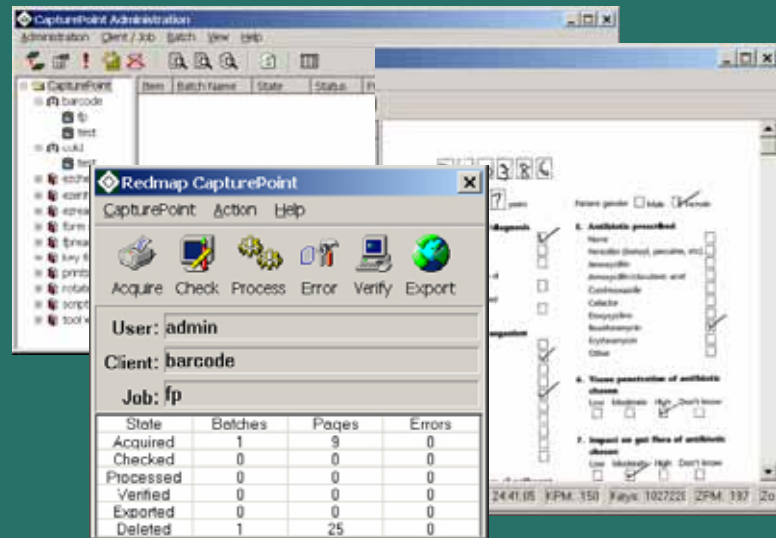
## Redmap CapturePoint Features

CapturePoint is a high-end, multi-user batch capture solution. It can be used as a stand-alone capture module, or integrated with Redmap's Manage suite of EDM solutions.

CapturePoint is ideal for high volume and high throughput scanning environments. Being multi-user, it provides for multiple scanning users, whilst enabling data entry and verification of batches to be performed at the same time.

Sophisticated, optional modules provide for libraries of forms, purpose built imaging controls, data entry improvements etc.

Batches of images and related meta-tag information can be integrated with Redmap Manage EDM solutions. Alternatively, scripts can be written to integrate with other ODBC databases.



## CapturePoint Features

- ◆ Multi-user scanning solution for high volume throughput. Minimum 2000 documents per day.
- ◆ Full process workflow management including operator stats, cost and client/job reporting.
- ◆ Batch import documents into Redmap Manage EDM to fully automate high volume indexing workloads.
- ◆ Neural Network based OCR, Barcode, ICR, OMR, MICR character recognition engines.
- ◆ Forms Designer for creating form zones.
- ◆ Dynamic forms recognition.
- ◆ Scripts for export of information to Manage EDM and other ODBC compliant databases.

## Redmap CapturePoint Options

- ◆ Forms Suite. Read form and zone based documents. Template Designer, Template Rules Creator.
- ◆ Imaging Suite. Scan, enhance, rotate, invert. Import process. QA process.
- ◆ Text Suite. Full page OCR, OCR Export.
- ◆ Data Entry Suite. Fast data-entry of meta-tag information that cannot be recognized, including QuickForm Key.
- ◆ Barcode Suite. Full page barcode, barcode export, barcode verifier.

## Redmap Capture Technology

- ◆ Win32 Application.
- ◆ Scaleable. Microsoft MSDE; SQL.
- ◆ Supports ISIS Level 1 through 4.
- ◆ ODBC, OCR, ICR, OMR, Barcode

## Optional Modules



Version control.  
Automated AI.  
Auditing.  
My Document integration.  
Purge and restore.  
Document level



Batch capture of standard forms & header sheets.  
OCR, Barcode, ICR.  
Export, Scripting.  
Auto-Indexing.  
Template Maker.



Branch Capture Solution.  
Thin Client Solution for scanning.



Backup. Restore. Protect.



Web browser access.  
Branch/Home access.  
Remote staff.  
External clients.  
Customer Service Portal.



Redmap hosted solution.  
No licence fees.  
Simple monthly fee.  
Outsourced storage.  
Combined off-site data strategy.